

MLS Area CLN

Listings	This Month			Year-to-Date		
	Dec 2021	Dec 2020	Change	2021	2020	Change
Single Family Sales	236	219	+7.8%	2,784	2,824	-1.4%
Condo/TH Sales	3	1	+200.0%	52	28	+85.7%
Total Sales	239	220	+8.6%	2,836	2,852	-0.6%
New Homes Only	21	20	+5.0%	178	366	-51.4%
Resale Only	218	200	+9.0%	2,658	2,486	+6.9%
Sales Volume	\$122,640,744	\$81,404,298	+50.7%	\$1,391,095,927	\$1,013,663,051	+37.2%
New Listings	159	158	+0.6%	3,249	2,785	+16.7%
Pending	--	--	--	--	--	--
Withdrawn	5	5	--	25	51	-51.0%
Expired	5	5	--	25	51	-51.0%
Months of Inventory	0.3	0.4	+13.9%	N/A	N/A	--

Average	This Month			Year-to-Date		
	Dec 2021	Dec 2020	Change	2021	2020	Change
List Price	\$501,445	\$365,542	+37.2%	\$460,323	\$356,961	+29.0%
List Price/SqFt	\$236	\$161	+46.6%	\$205	\$153	+34.5%
Sold Price	\$513,141	\$370,020	+38.7%	\$490,513	\$355,422	+38.0%
Sold Price/SqFt	\$242	\$163	+48.1%	\$219	\$152	+43.9%
Sold Price / Orig LP	102.4%	101.4%	+1.1%	107.2%	99.7%	+7.6%
Days on Market	19	24	-22.7%	13	45	-71.7%

Median	This Month			Year-to-Date		
	Dec 2021	Dec 2020	Change	2021	2020	Change
List Price	\$450,000	\$325,000	+38.5%	\$409,889	\$306,178	+33.9%
List Price/SqFt	\$232	\$161	+44.0%	\$202	\$151	+33.5%
Sold Price	\$458,486	\$328,970	+39.4%	\$435,235	\$306,035	+42.2%
Sold Price/SqFt	\$235	\$162	+44.8%	\$217	\$151	+44.2%
Sold Price / Orig LP	100.0%	100.0%	+0.0%	103.8%	100.0%	+3.8%
Days on Market	7	5	+40.0%	5	15	-66.7%

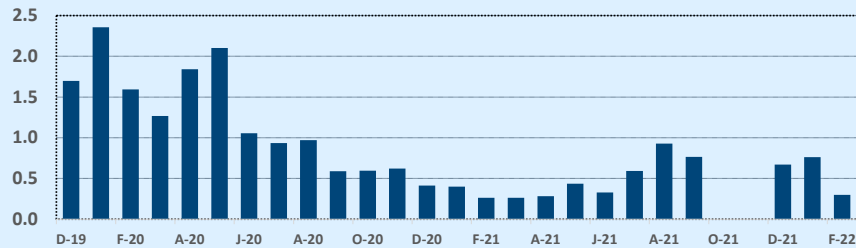
Residential Statistics

Independence Title

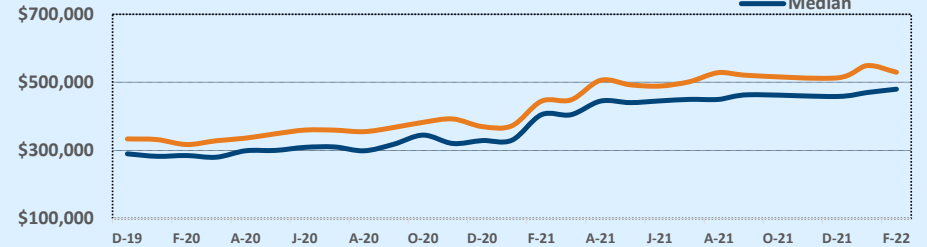
December 2021

Price Range	This Month			Year-to-Date		
	New	Sales	DOM	New	Sales	DOM
\$149,999 or under	--	--	--	2	1	4
\$150,000- \$199,999	--	--	--	7	5	7
\$200,000- \$249,999	--	--	--	22	18	16
\$250,000- \$299,999	2	3	27	171	119	18
\$300,000- \$349,999	10	12	18	368	315	13
\$350,000- \$399,999	26	40	7	649	510	9
\$400,000- \$449,999	36	56	14	499	551	11
\$450,000- \$499,999	22	41	23	428	363	16
\$500,000- \$549,999	13	24	18	252	256	10
\$550,000- \$599,999	11	17	8	211	165	10
\$600,000- \$699,999	13	22	21	257	232	14
\$700,000- \$799,999	8	13	41	179	134	17
\$800,000- \$899,999	7	3	25	80	59	11
\$900,000- \$999,999	6	1	1	42	32	11
\$1M - \$1.99M	4	7	70	75	72	20
\$2M - \$2.99M	1	--	--	6	3	34
\$3M+	--	--	--	1	1	616
Totals	159	239	19	3,249	2,836	13

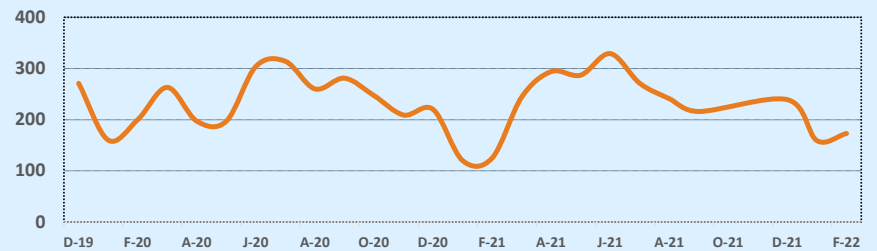
Months of Inventory - Last Two Years



Average & Median Sales Price - Last Two Years



Number of Sales - Last Two Years



Based on information from the Austin Board of REALTORS® (alternatively, from ACTRIS). Neither the Board nor ACTRIS guarantees or is in any way responsible for its accuracy. The Austin Board of REALTORS®, ACTRIS and their affiliates provide the MLS and all content therein "AS IS" and without any warranty, express or implied. Data maintained by the Board or ACTRIS may not reflect all real estate activity in the market.